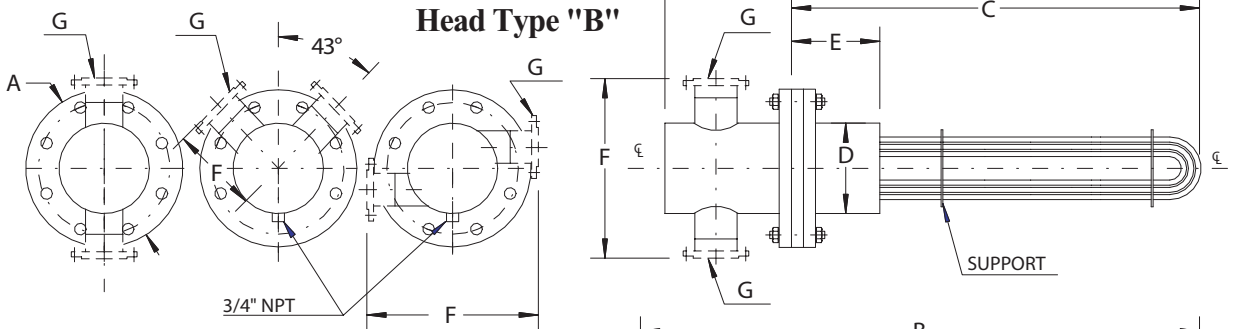
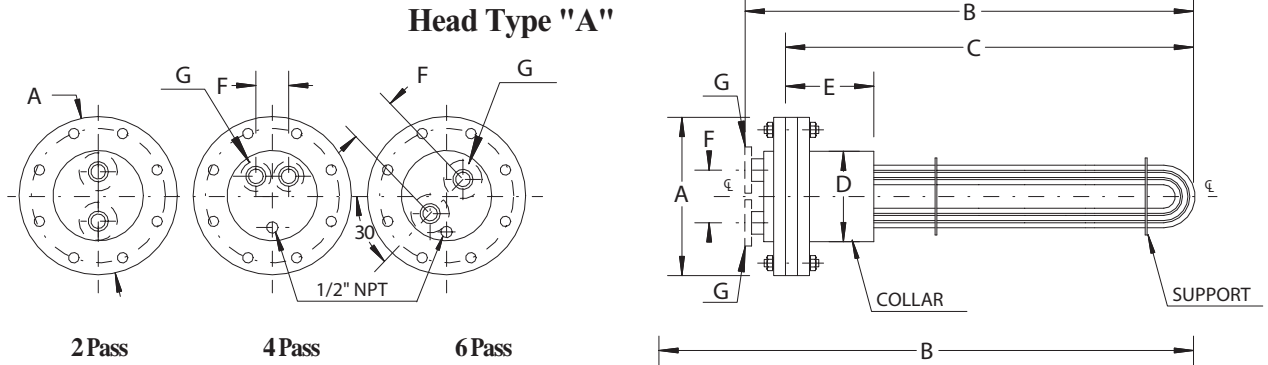
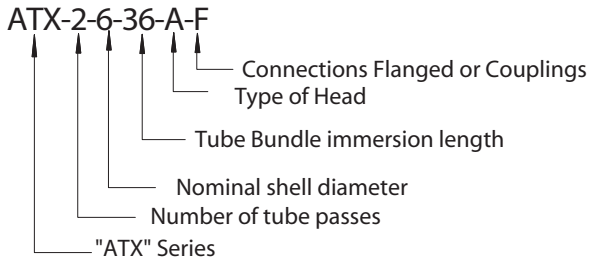


"U-Tube" Immersion Heaters Series "ATX"

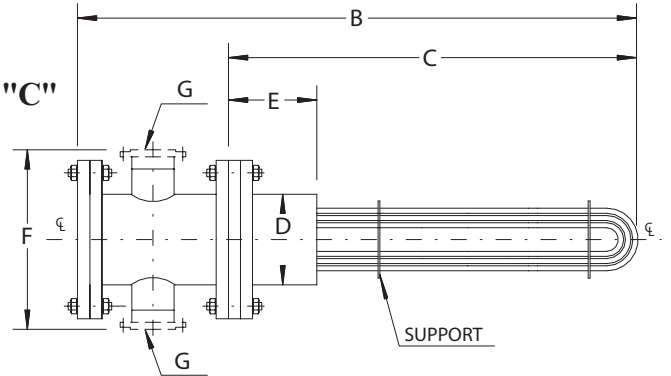
The "ATX" Immersion Heater is designed to heat liquids in storage tanks with steam, hot water or other high temperature liquid, flowing through the tubes. Another application is heating of liquid, which flows through tubes, by immersion the tube bundle in a boiler with steam, hot water or other high temperature liquid. The number of tube passes is variable in order to provide the highest velocity of liquid for maximal heat transfer. The Head Type "A" is more economical. The Head Type "B" permits removal of the tube bundle without dismantling head piping. The channel Head Type "C" allows to check and plug of leaking tubes without dismantling the head.



Complete model number as per the following example:



Channel Head Type "C"



Design Pressure & Temperature	Side	Standard	Customized
	Shell		150 psi @ 400 F
Tube		150 psi @ 400 F	
Head		Carbon Steel, Stainless Steel.	
Collar		Carbon Steel, Stainless Steel	
Tubesheet		Carbon Steel, Stainless Steel	
Tubing O.D.		Copper, Stainless Steel.	
		1/2", 5/8", 3/4", "1", "1 1/4"	

- * - Various materials and working conditions can be provided.
- Legs can be supplied when specified.
- Space equal to or greater than dimension "B" should be provided for removal of tube bundle.
- * - All Heat Exchangers are designed and manufactured according to ASME Code, Section VIII, Div.1. ASME U-1 Form, Stamp, and N.B. Number are provided upon request for an additional cost.
- * - All heaters have a one year guarantee against failure caused by materials or workmanship, but not against gasket failure or damage caused by corrosion, water hammer, fouling, sealing, excessive pressure or temperature, incorrect installation or other factor beyond the manufacturer's control.

