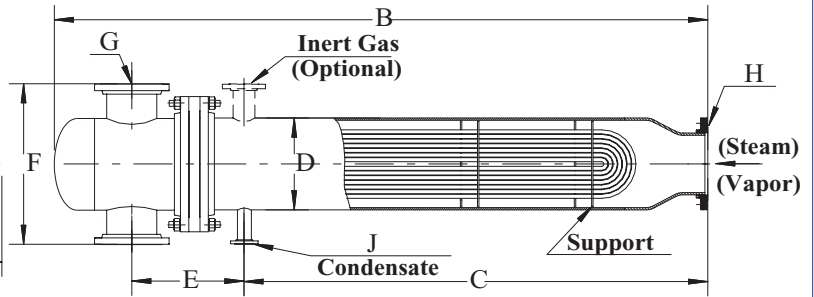
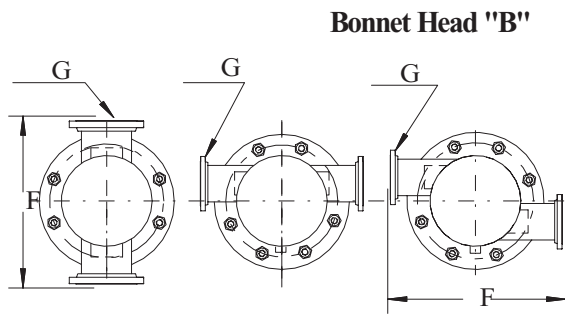
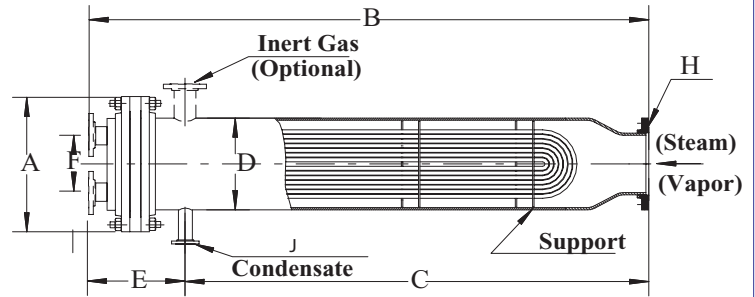
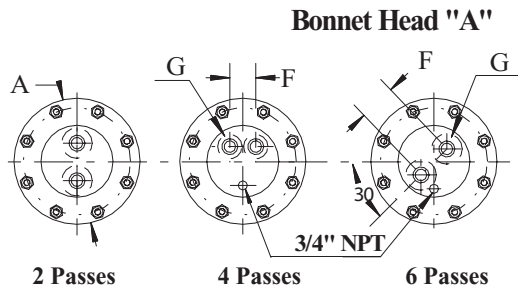


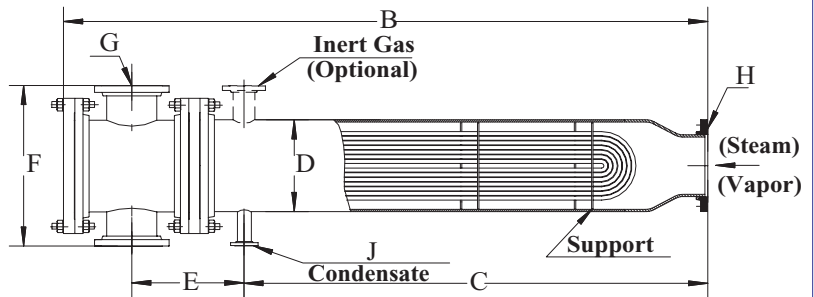
# Low Pressure Steam/Vapor Vent Condenser Series "AVC"



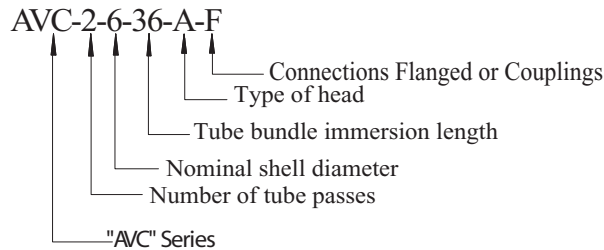
<b>Typical Applications</b> Heating systems Service water heating Vacuum condensers	To have the capacity to condense _____ lb/hr of (steam)(_____) in the shell @ _____ (psia)(psig) with _____ lb/hr (air) (inert gas), using _____ lb/hr of (water)(_____ cooling fluid) entering @ _____ F and leaving @ _____ F in the tubes.
	Unit to be constructed in accordance with ASME requirements. ASME Stamp is ( not ) required.  Unit to have no more than _____ ft. of length and _____ psi cooling fluid pressure drop.



**Channel Head "C"**



Complete model number as per the following example:



Design Pressure & Temperature	Side	Standard	Customized
	Shell	150 psig @ 400 F / FV	
	Tube	150 psig @ 400 F	
Head	Carbon Steel, Stainless Steel		
Shell	Carbon Steel, Stainless Steel		
Tubesheet	Carbon Steel, Stainless Steel		
Tubes O.D.	Stainless Steel		
	1/2", 5/8", 3/4", 1"		

- \* - Various materials and working conditions can be provided.
- Legs can be supplied when specified.
- Space equal to or greater than dimension "B" should be provided for removal of tube bundle.
- Fixed tubesheet is optional.

\* - All condensers are designed and manufactured according to ASME Code, Section VIII, Div.1. ASME U-1 Form, Stamp, and N.B. Number are provided upon request for an additional cost.

\* - All heaters have a one year guarantee against failure caused by materials or workmanship, but not against gasket failure or damage caused by corrosion, water hammer, fouling, sealing, excessive pressure or temperature, incorrect installation or other factor beyond the manufacturer's control.

# Low Pressure Steam/Vapor Vent Condenser Series "AVC"



Threaded couplings are according to ANSI NPT for sizes up to 3".

Flanged connections are optional.

For 4" and up the connections are flanged according to ANSI.

Vapor Vent Condenser shell nozzles are flanged.

Direction and sizes of connections may be specified by the customer, providing easy assembly of a new system or replacement of an old heat exchanger. The actual size of the vapor inlet is calculated for its volume flow rate.

Actual dimensions of the condenser depend on its performance and are provided by a certified drawing upon receipt of order.

DIMENSIONS TABLE

AVC	A	D	E	F			G			H	J	Head
				2 PASS	4 PASS	6 PASS	2 PASS	4 PASS	6 PASS			
*-4-**	9	4-1/2	9	2-1/2	2-1/2		1-1/4	1		AS CALCULATED	3/4	Type "A"
*-5-**	10	5-9/16	9	2-1/2	2-1/2		1-1/4	1			1	
*-6-**	11	6-5/8	10	3-1/4	2-7/8	4-3/4	2	1-1/2	1-1/4		1	
*-8-**	13-1/2	8-5/8	10	5	3-7/8	6	2-1/2	2	2		1-1/4	Types "B" & "C" are optional
*-10-**	16	10-3/4	11	5-7/8	4-1/4	7-5/8	3	3	2-1/2		1-1/2	
*-12-**	19	12-3/4	11	6-1/2	6-1/4	9	4 Flg	3	3		2	
*-14-**	21	14	15	22	7	22	5 Flg	4 Flg	3	AS CALCULATED	2-1/2	Types "B" & "C"
*-16-**	23-1/2	16	16	24	12	24	6 Flg	5 Flg	4 Flg		2-1/2	
*-18-**	25	18	18	27	13	28	8 Flg	5 Flg	4 Flg		3	
*-20-**	27-1/2	20	20	28	14	30	8 Flg	6 Flg	5 Flg		3	Type "A" is Optional
*-24-**	32	24	22	32	16	34	10 Flg	8 Flg	6 Flg		4	
TYPE												
SIZE												

CUSTOMIZED CONNECTIONS

Dimensions in inches for condensers with head type "A". Weight in pounds.

AVC		**24	**30	**36	**42	**48	**54	**60	**66	**72	**78	**84	**90	**96	**108	**120	**144
*-4-**	B	38	44	50	56	62	68	74	80	86	92	98	104	110	122	134	158
	C	29	35	41	47	53	59	65	71	77	83	89	95	101	113	125	149
	WGT	68	75	83	90	96	104	112	119	127	134	141	148	156	172	188	204
*-5-**	B	39	45	51	57	63	69	75	81	87	93	99	105	111	123	135	159
	C	30	36	42	48	54	60	66	72	78	84	90	96	102	114	126	150
	WGT	100	115	130	145	160	175	190	205	230	245	260	275	290	320	350	380
*-6-**	B	40	46	52	58	64	70	76	82	88	94	100	106	112	124	136	160
	C	30	36	42	48	54	60	66	72	78	84	90	96	102	114	126	150
	WGT	134	148	162	176	190	204	218	233	248	261	276	290	305	335	365	395
*-8-**	B	40	46	52	58	64	70	76	82	88	94	100	106	112	124	136	160
	C	30	36	42	48	54	60	66	72	78	84	90	96	102	114	126	150
	WGT	190	222	250	277	305	333	360	388	416	444	472	500	527	590	650	690
*-10-**	B	41	47	53	59	65	71	77	83	89	95	101	107	113	125	137	161
	C	30	36	42	48	54	60	66	72	78	84	90	96	102	114	126	150
	WGT	320	348	377	404	432	459	487	515	544	571	599	626	653	710	766	812
*-12-**	B	42	48	54	60	66	72	78	84	90	96	102	108	114	126	138	162
	C	31	37	43	49	55	61	67	73	79	85	91	97	103	115	127	151
	WGT	417	453	490	527	564	601	638	675	714	751	788	825	862	937	1011	1085
*-14-**	B	59	65	71	77	83	89	95	101	107	113	119	125	131	143	155	179
	C	36	42	48	54	60	66	72	78	84	90	96	102	108	120	132	156
	WGT	660	704	748	791	835	879	923	967	1014	1058	1102	1146	1190	1282	1420	1558
*-16-**	B	62	68	74	80	86	92	98	104	110	116	122	128	134	146	158	182
	C	38	44	50	56	62	68	74	80	86	92	98	104	110	122	134	158
	WGT	819	874	929	984	1040	1096	1152	1207	1271	1327	1383	1438	1494	1614	1725	1836
*-18-**	B	65	71	77	83	89	95	101	107	113	117	125	131	137	149	161	185
	C	39	45	51	57	63	69	75	81	87	93	99	105	111	123	135	159
	WGT	1055	1130	1205	1280	1356	1431	1506	1582	1662	1742	1818	1893	1968	2129	2279	2430
*-20-**	B	72	78	84	90	96	102	108	114	120	126	132	138	144	156	168	192
	C	44	50	56	62	68	74	80	86	92	98	104	110	116	128	140	164
	WGT	1258	1357	1456	1555	1654	1753	1852	1951	2062	2161	2260	2359	2458	2668	2866	3064
*-24-**	B	74	80	86	92	98	104	110	116	122	128	134	140	146	158	170	194
	C	44	50	56	62	68	74	80	86	92	98	104	110	116	128	140	164
	WGT	1450	1560	1650	1750	1850	1950	2050	2150	2260	2360	2460	2560	2660	2870	3070	3270