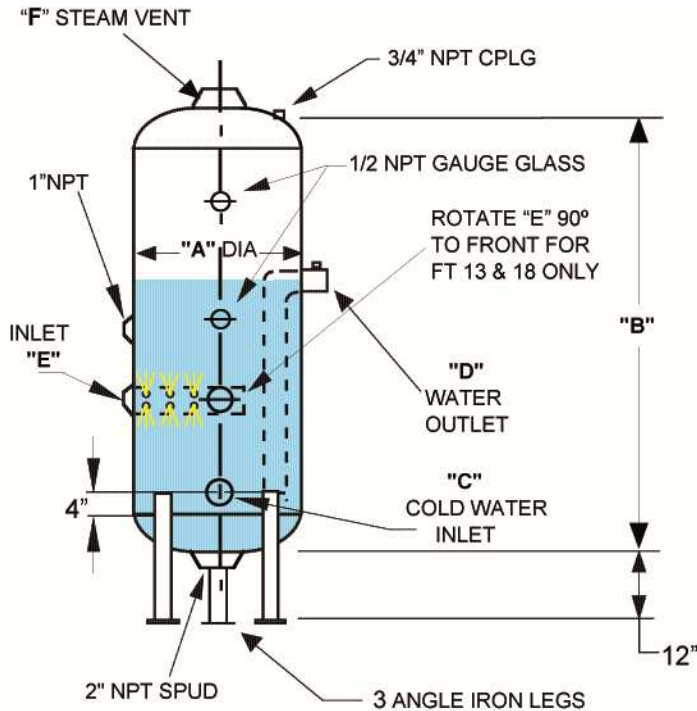


## ASME FLASH TANKS

### Type AFT-V

#### General Description



ALSTROM Flash Tanks are designed for systems that require flashing of high pressure condensate into steam, for low pressure heating supply mains, and to reduce and cool low pressure steam before it is returned to the boiler, condensate receiver, or discharged into sewer.

#### STANDARD

Tanks are manufactured to ASME Sect. VIII Div. 1 Code Stamp with U-1A Manu. Data Report Provided.

\* Carbon steel construction.

\* Prime coated exterior.

\* All standard sizes built for ASME 200 working and 300 PSI test pressure or higher ratings available.

**\*\*ALL SPARGE PIPES SST 3/16 DIA HOLES\*\***

Model No:	Capacity Gallons	A	B	STANDARD CONNECTIONS				Weight lbs	OPTIONS		
				C	D	E	F		Sparge Tube SST**	Drop Legs	Handhole
AFT-13V	13	10	39	1"	1 1/2"	1 1/2"	2"	79	1 1/2" X 8"	1 1/2"	4" X 6"
AFT-18V	18	12	39					94			
AFT-24V	24	14	39					108			
AFT-30V	30	16	39	1 1/2"	2"	2"	2 1/2"	121	1 1/2" X 12"	2"	4" X 6"
AFT-48V	48	18	48	2"				168			
AFT-80V	80	24	48	2 1/2"	3"	3"	3"	214	2" X 24"	3"	12" X 16"
AFT-125V	125	30	48	285							
AFT-180V	180	36	48	339							
AFT-250V	250	42	48	4"	4"	4"	4"	550	3" X 36"	4"	12" X 16"
AFT-340V	340	42	56					790			
AFT-410V	410	42	60					902			
AFT-550V	550	48	60	1167	4" X 36"	4"	12" X 16"				

**NOTE:** SPARGE PIPE, DROP LEG AND HANDHOLE ARE AVAILABLE AS OPTIONAL, EQUIPMENT LARGER CAPACITIES, WORKING PRESSURES AND FITTING AVAILABLE, ALSO BOILER FEED, CONDENSATE AND BOILER BLOWDOWN TANKS.

- Shell & Tube Heat Exchangers
  Shell & Coil Heat Exchangers
  Plate & Frame Heat Exchangers
  Replacement Tube Bundles
  Unfired Steam Generators
  Hot Water Generators
  Instantaneous Water Heaters
  Heat Recovery Systems
  Asphalt Heaters
  Packaged Pumping Systems
  Fuel Oil Preheaters
  Fuel Oil Heaters
  Liquid/Vapor Separators
  Heat Recovery Boilers
  Deaerators