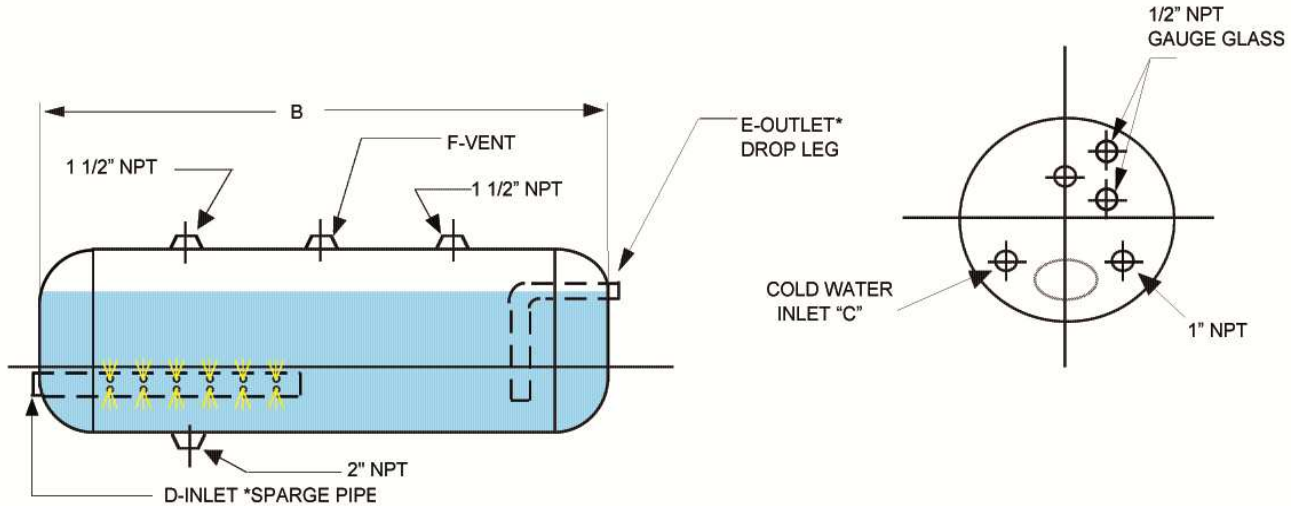


ASME FLASH TANKS

Type AFT-H

General Description

ALSTROM Flash Tanks are designed for systems that require flashing of high pressure condensate into steam, for low pressure heating supply mains, and to reduce and cool low pressure steam before it is returned to the boiler, condensate receiver, or discharged into sewer.



STANDARD

Tanks are manufactured to ASME Sect. VIII Div. 1 Code Stamp with U-1A Manu. Data Report Provided.

* Carbon steel construction. * Prime coated exterior.

* All standard sizes built for ASME 200 working and 300 PSI test pressure or higher ratings available.

****ALL SPARGE PIPES SST 3/16 DIA HOLES****

Model No:	Capacity Gallons	A	B	STANDARD CONNECTIONS				Weight lbs	OPTIONS			
				C	D	E	F		Sparge Tube SST**	Drop Legs	Handhole	
AFT-13H	13	10	39	1"	1 1/2"	1 1/2"	2"	79	1 1/2" X 12"	1 1/2"	4" X 6"	
AFT-18H	18	12	39									94
AFT-24H	24	14	39									108
AFT-30H	30	16	39	1 1/2"	2"	2"	2 1/2"	168	2" X 24"	2"	4" X 6"	
AFT-48H	48	18	48	2"								214
AFT-80H	80	24	48	2 1/2"	3"	3"	3"	285	3" X 36"	3"	12" X 16"	
AFT-125H	125	30	48	339								
AFT-180H	180	36	48	550								
AFT-250H	250	42	48	4"	4"	4"	4"	790	4" X 36"	4"	12" X 16"	
AFT-340H	340	42	56									902
AFT-410H	410	42	60									
AFT-550H	550	48	60					1167	4" X 36"	4"	12" X 16"	

NOTE: SPARGE PIPE, DROP LEG AND HANDHOLE ARE AVAILABLE AS OPTIONAL, EQUIPMENT LARGER CAPACITIES, WORKING PRESSURES AND FITTING AVAILABLE, ALSO BOILER FEED, CONDENSATE AND BOILER BLOWDOWN TANKS.

- Shell & Tube Heat Exchangers
 Shell & Coil Heat Exchangers
 Plate & Frame Heat Exchangers
 Replacement Tube Bundles
 Unfired Steam Generators
 Hot Water Generators
 Instantaneous Water Heaters
 Heat Recovery Systems
 Asphalt Heaters
 Packaged Pumping Systems
 Fuel Oil Preheaters
 Fuel Oil Heaters
 Liquid/Vapor Separators
 Heat Recovery Boilers
 Deaerators